

Helping Your Child Test from Home

NWEA MAP Growth Assessment

The start of this school year is different...

- ...But some things will remain the same, they will just take place at home instead of in the classroom
- One example is for CMSD scholars in grades 1 through 10 to take a test called the NWEA MAP Growth assessment, or “the MAP test”
- This test is taken multiple times during the school year and is an important tool used by your child’s teacher to plan instruction based on the results

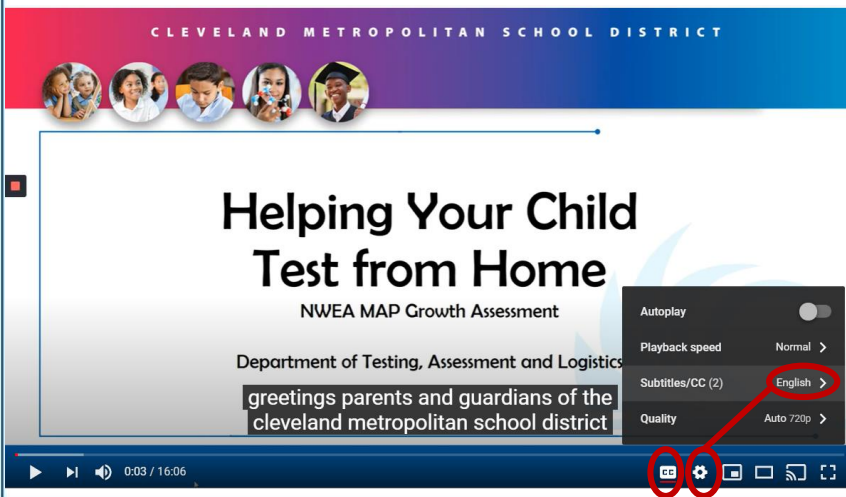
What is the MAP Growth test?

- It is a computer-based test
- Students take two tests, one reading, one math
- There are a combination of multiple choice and other question types to help your child demonstrate what they know

How does the test work?

- Students answer 40-50 adaptive questions
- They can take up to 90 minutes in one seating. They can take up to two days to finish the test
- Remind your child that its **OK if they don’t know the answer (and you shouldn’t help them)** – the whole point is to find out what they are ready to learn next


Here’s how you can help your child test at home:

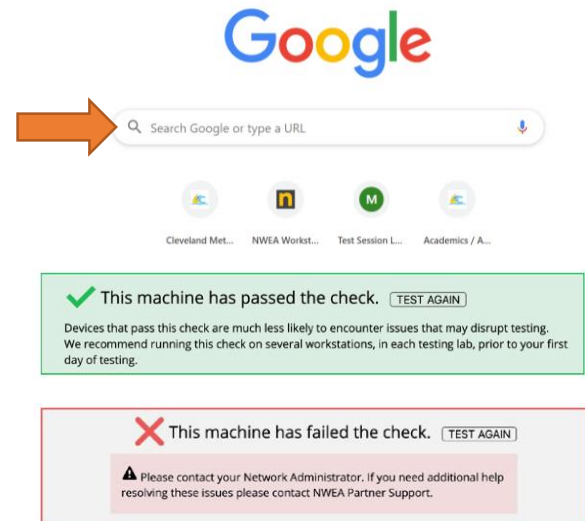


- Please watch this video that explains how families can prepare for testing at home
- <http://bit.ly/cmsdtesthome>
- This video is close captioned and the subtitles can be auto-translated into multiple languages

Step 1

Make sure the computer can be used for testing

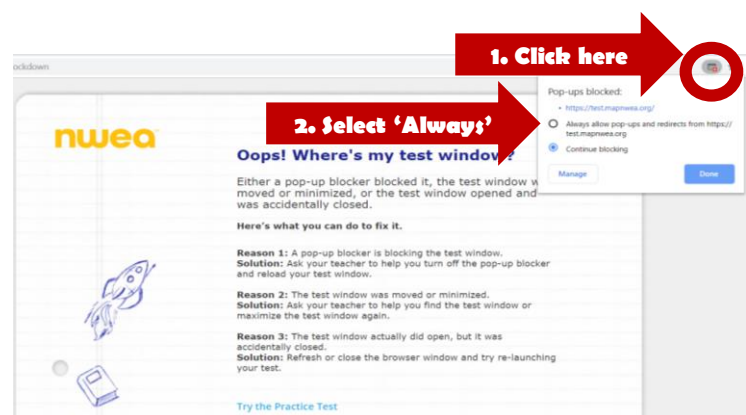
- Open a Google Chrome browser session by clicking on this icon 
- Type: **check.nwea.org** where it says “Search Google or type a URL”
- This site will run a test on your computer – if it passes, the computer is ready
- If the computer doesn’t pass, and it is a CMSD computer, call CMSD DoIT at 216.838.0440 for assistance



Step 2

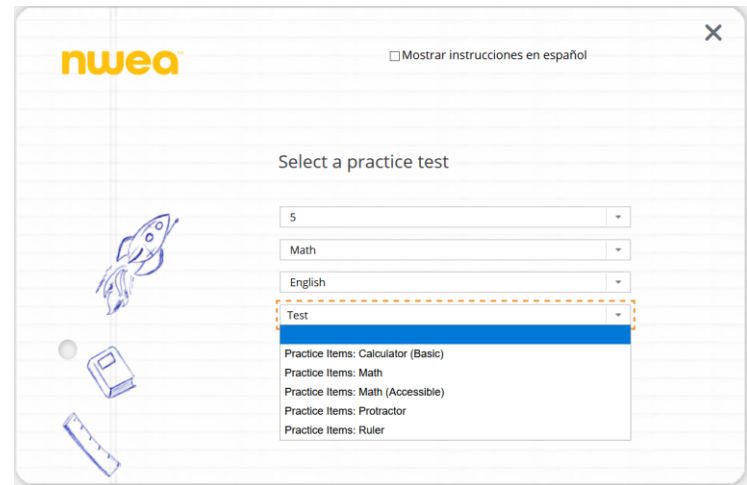
Allow your child to practice taking the test

- Practice helps your child become comfortable with navigating the test screens and become familiar with the types of questions asked
- Open a Google Chrome browser session by clicking on this icon
- Type: **test.mapnwea.org** where it says “Search Google or type a URL”
- You may get an “Oops!” message about pop-up blocking. Follow the instructions to allow pop-ups



Getting started with the practice test

- Select 'Try Practice Test'
- On the next screen, type the word:
grow
- For both the username and password, click the blue arrow
- On the next screen, select your child's grade and the subject (Reading or Math)
- Select English as the language and select the test
- Check the 'Text to Speech' box (math only), click the blue arrow



Becoming familiar with the test portal

- Click on the blue arrows at the bottom of the screen to move to the next question. Students can't go back to previous questions.
- Use the navigation bar at the top of the screen to hear questions (math only), enlarge the screen, or use the tools



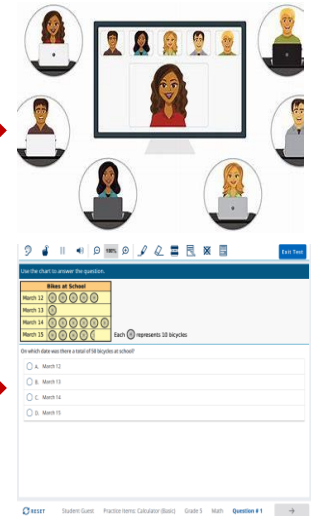
Step 3

Help your child on the day of the test

- Make sure your child gets plenty of rest the night before and has breakfast in the morning
- Provide a place for them to test that is quiet / free of distractions
- Make sure they have scrap paper and a pencil
- On the computer, your child will need to have TWO Google Chrome browser windows open
 - For the video chat with the teacher
 - For the MAP test – teach.mapnwea.org

1. Video chat

2. MAP test



Taking and finishing the test

- Once your child starts the test, let them work at their own pace
- Remember, they can't go backwards, only forward to the next question
- If your child needs a break, they should let the teacher know using the video chat
- Once your child has answered the last question, the test will complete and their score will be shown
- Close the testing browser session and report back to the teacher using the video chat for any additional instructions

Suzanne Banks
Congratulations, you finished the test!

The total test time was: 00:17:10
Date: August 6, 2020 Test Name: Demo Growth: Math 2-5

CONFIDENTIALITY NOTICE: This information may be confidential and legally protected from disclosure.
© NWEA 2018. MAP is a registered trademark. NWEA, MAP Growth and MAP
2018 are trademarks of NWEA in the U.S. and in other countries.

nwea